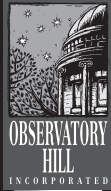


OH Journal



The Newsletter for the Friends & Neighbors of Observatory Hill

Summer 2017

Observatory House Tour 2017 – The Neighborhood with Spirit By Jeffrey Wagner

Observatory Hill is a neighborhood with spirit and this year's house tour should prove that true. The line-up of houses is an excellent one and will feature numerous architectural styles, unique views and houses in the process of being restored. We will also be offering beer tastings from local breweries and cocktails from Wigle Whiskey designed especially for the tour. Food trucks including Pittsburgh Po'Boy, Culinary Artists, Panca Pitt and Rollin BBQ will join the event to complete a great package of festivities featuring our neighborhood.

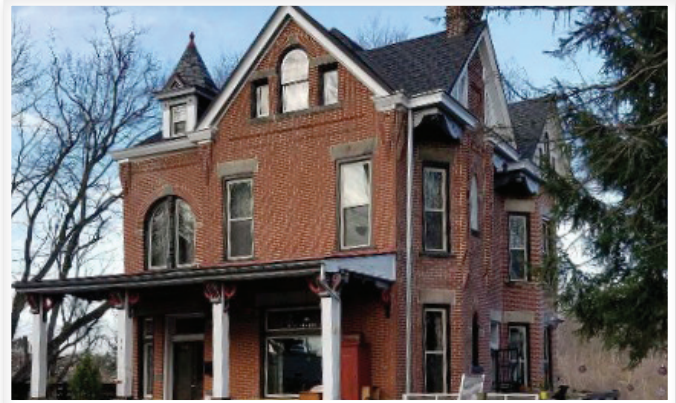
The tour will start at Riverview Presbyterian Church on Perrysville Avenue and move north almost to the border of the neighborhood (and city), traversing the highest hill in the city of Pittsburgh. This area, once known as the Graham Plan when the development for the hill was planned in the early 1920's, features homes on Waldorf, Garvin and Franklin Streets, including a large brick Victorian that has gotten attention from the press and social media for the scale and vision of the restoration project now ongoing. For more information about this particular project see [facebook.com/Thewaldorfstoryof](https://www.facebook.com/Thewaldorfstoryof).

Bonvue Street runs along the base of the hill and features houses that Observatory Hill Inc, our community non-profit, has purchased and is restoring to sell. This is an incredibly important community revitalization project and you will see finished as well as work in progress, updating and bringing back the character of these once deteriorating houses.

A few houses featured on this year's tour, including a wonderful craftsman style house on Perrysville Avenue, were on the tour in previous years and if you were on any of those tours, you will have a chance to see the projects and changes that have taken place in the intervening years.

This will be a relatively compact and walkable tour but as always, people can also park at various spots to shorten the walk or take one of our trusty Molly's Trolleys around the entire loop. The tour begins at 12:00 pm and runs until 5:00 pm so however you travel about, be sure to give yourself plenty of time to enjoy beverages, grab some food and chat with homeowners, neighbors and fellow tour goers.

We will see you all there!



ANIMAL FRIENDS MAKES AN IMPACT by Kaley Kaczynski

The Animal Friends for Life (AFFL) program extends the reach of free and low-cost animal welfare services, resources and information to people and pets in Observatory Hill and Perry Hilltop. Our mission through AFFL is to remove any and all barriers to accessible pet wellness resources with a strong focus on spay/neuter. Since January of 2016, the AFFL program has assisted over 570 pets in the North Side of Pittsburgh.

Spay/neuter surgery, vaccinations and preventative care for your pets can be very expensive, but are important for your pet's overall

well-being. Spaying or neutering your pet cannot only lower their risk of cancer, but it can lengthen their life.

Through the AFFL program, you are eligible to receive a free wellness package for each of your pets. If needed, staff members will also transport your pet to and from the veterinarian.

If you have a dog, cat, rabbit or care for community cats in need of wellness services, contact the Animal Friends for Life program.

To learn more about your benefits as an Observatory Hill resident, call or text AFFL Coordinator Kaley Kaczynski at 412-865-9560.

What's Inside:



House Tours 2017–1
Animal Friends–1
From Harris' Office–2

Library Happenings–2
Ridesharing Program–2
Good Deeds Day–3

Mayor's Message–3
Ranger Notes–4
5K/Heritage Day–5

Calendar of Events–5
Neighborhood Clean-Up–6
Baytree Garden–6

FROM THE OFFICE OF DARLENE HARRIS



This summer is highly anticipated by all of us in the Northside. In Observatory Hill, we have installed several cameras in various parts of the neighborhood, including Allen Place Community Services. Since these changes were made, Observatory Hill has been able to apply for another grant for cameras in other parts of the neighborhood. I extend my gratitude to all who have been part of the effort to keep Observatory Hill safe. Thank you, and keep up the good work!

In other news, this summer we hope to have DPW pave a few streets in the Northside. As it happens, my office will try to send out notices of street closures and detours. Also, the summer weather brings out the animals again, so please be careful driving. Watch out for deer during the evening as they start to make their way near major roadways again, and enjoy the beautiful weather!

Feel free to contact me with any questions or concerns at darlene.harris@pittsburghpa.gov or 412-255-2135.

Darlene M. Harris, Councilwoman, District 1



Carnegie
Library of
Pittsburgh

WOODS RUN
1201 Woods Run Ave
Pittsburgh, PA 15212
412-761-3730

Wednesday Walk

Wednesdays | 9:30 – 10:30 am

Socialize and get some exercise on our 1-2 mile walk around the neighborhood. All ages and abilities are welcome (anyone under 18 must be accompanied by an adult). We suggest you bring a water bottle for the walk. We will meet at the front of the library. After the walk, please come in to the library for a healthy snack and a drink!

Celebrate: Summer Reading Kickoff Party

Thursday, June 15 | 10:30 am – 12 pm

Bring the whole family to help us celebrate the start of Summer Reading with *Wild World of Animals*, free refreshments, games, crafts and more!

Parachute Play

Tuesdays in July | 10:30 – 11 am

Using a parachute, children age 18 months - 5 years will actively engage with their peers in a lively, supportive atmosphere where movement and musical experience are the goal!

Celebrate: National Night Out

Tuesday, August 1 | 5 – 8 pm

Join your neighbors for National Night Out! We'll be outside on the lawn with family friendly activities and refreshments, along with community friends from Providence Family Support Center and the Brightwood Civic Group.

Back to School Party

Thursday, August 24 | 6 – 7:30 pm

Join us on the lawn to celebrate another great year of Summer Reading! Activities for all ages.

Ridesharing Program Comes to Pittsburgh by Lisa Kay Schweyer

Do you need help with transportation? Then this local non-profit may be just what you need. The Southwestern Pennsylvania Commission's CommuteInfo program is coordinated in partnership with transportation management associations, transportation providers, businesses, and non-profit service organizations throughout Southwestern PA. The CommuteInfo program is designed to increase the number of people who travel to work or school by riding transit, carpooling, vanpooling, or bikepooling. The goal is for commuters living, working or attending school within the 10-county Southwestern Pennsylvania Commission Region to choose ridesharing at least twice a week.

Operating a customer-focused full service commuting options resource center, running the region's vanpool and carpool programs, and facilitating the forum for coordinating regional ridesharing efforts—SPC's CommuteInfo Program is the regional

one stop shop for ridesharing services. The program provides resources and information to assist individuals traveling to work or school and helps regional employers learn more about commuting options.

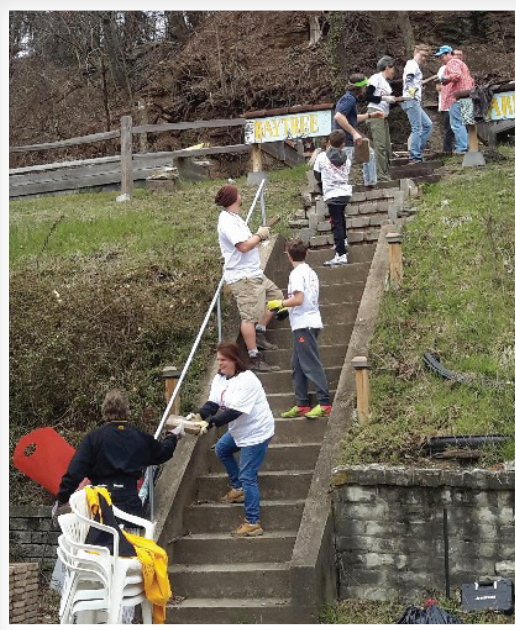
- Commuters can register with CommuteInfo to request a commuting options report which includes contact information for the regional fixed route transit operators, nearby park-n-ride facilities and a list of other individuals making a similar commute who are interested in vanpooling, carpooling, and/or bikepooling.
- Employers can access technical assistance, articles, posters, and surveys to use during employee recruitment, with job applicants or with existing employees.

For more information check out our website: spcregion.org or call 412-391-5590.

GOOD DEEDS DAY A SUCCESS by Leslee Schaffer

Thank you to everyone who gave up a part of their Sunday afternoon to help us at the Baytree Street Community Garden in honor of Good Deeds Day – an international day of volunteerism - sponsored by the Jewish Federation of Greater Pittsburgh. This annual event invites

Teamwork



volunteers to participate in a neighborhood project and the Jewish Federation works to help promote the event and to wrangle up some muscle to lend a hand.

We had a good turn out with over 15 people registering to participate. Funds for this project were provided by the Neighbor to Neighbor Grant which we were awarded by The Sprout Fund. Our garden engineer, Doug Deckert, mapped out the materials and arranged a delivery of more than 3,286 pounds of bricks and pavers

Craftsmanship



to build our patio space and fire pit. Thanks to our many volunteers, we formed a human chain and passed the stones up the stairs in no time. Patio measuring and assembly began. We also weeded, raked, picked up litter and prepped the garden beds for planting.

A Word From The Mayor's Office

Summer is coming to Pittsburgh! As summer approaches, we look forward excitedly towards warmer weather and outdoor fun! The Office of Mayor William Peduto would like to share some exciting news from the first few months of 2017 with our friends in Observatory Hill.

In February, Mayor Peduto issued five executive orders to begin implementing recommendations by the City's Affordable Housing Task Force, covering ways to protect people from losing their housing and encourage building of affordable housing. The task force hewed to three overarching goals: respecting and stabilizing existing communities, creating quality affordable housing opportunities, and maximizing the impact of resources by ensuring lasting affordability. The Mayor's executive orders expand on these three goals and seek ways to reach them.

On March 8, 2017, Mayor Peduto unveiled ONEPGH, Pittsburgh's first-ever comprehensive Resilience Strategy. This new roadmap address Pittsburgh's most pressing and interconnected challenges that weaken the fabric of the city on a day-to-day and long-term basis, including inequity, public health, aging infrastructure, flash floods, and other severe weather events. The strategy utilizes Pittsburgh's unique communities and geographies, as well as existing city-wide resilience initiatives, to engage neighbors and make Pittsburgh livable for all its residents. The basis of the plan is the City's adopted "p4" values



– a holistic, community-centered approach that emphasizes People, Place, Planet and Performance. The full ONEPGH strategy is available at: pittsburghpa.gov/onepgh/index.html.

This year, the City of Pittsburgh in collaboration with the County of Allegheny, Pittsburgh Public Schools, Allegheny Partners for Out-of-School

Time, an initiative of United Way of Southwestern PA, Allies for Children, Carnegie Library of Pittsburgh, Partner4Work, Remake Learning Network, The Mentoring Partnership, Sprout Fund and Kidsburgh will lead, "Summer 17: Dream! Explore! Do!" In Pittsburgh, the goal is to get 27,000 children and youth connected to summer learning opportunities! Whether it is a summer job, a summer camp, a summer adventure to a local park, every young Pittsburgher will be linked to an extended learning opportunity! A checklist for parents, an activities calendar, and a centralized repository of summer programs are available at pgsummer17.com!

We are hoping to employ 2000 youth across the city and the county this summer through the Learn and Earn Summer Youth Employment Program. Applications are open, so please encourage youth ages 14-21 to apply! Visit www.jobs4summer.org for more information.

News and Notes from the Riverview Park Ranger

Dog owners are the most frequent and regular users of many Pittsburgh parks including Riverview. Dogs and their owners utilize the park all hours, day and night, regardless of weather or season. Their regular presence is extremely helpful to maintaining safety. Friendships and significant socialization occurs in off-leash dog parks including the two behind the Observatory. Most dog owners are careful stewards who pick up litter, observe and report potential hazards and contribute to overall enjoyment. However, dog owners who do not adhere to rules and regulations, create problems and issues. Interestingly many “law breaking” dog owners are aware of the rules but have decided they are “optional”. Reasons include:

- My dog is trained and friendly, has never bitten anyone;
- I never see anyone on this trail so I let my dog run free.
- Dogs’ feces are a natural part of the ecosystem and this is a big park, it won’t matter if I leave it behind.
- My dog is happy when chasing squirrels and/or deer, its natural behavior.
- My dog pulls on the leash and I may fall.
- Everyone in this neighborhood agrees that it’s ok to let dogs run here.

Pittsburgh ordinances require that no person shall permit their dog to run at large in any public place. Dogs must be restrained by a leash or chain not exceeding 6 feet. Dogs are not permitted on playgrounds or courts at any time. Owners are also required to pick up their dog’s waste and dispose of it in an appropriate receptacle. These ordinances exist for good reason and violations are punishable by fine.

Other than fear of a fine, there are many reasons to follow these laws. The rules fall in line with “Leave No Trace” principles which ask that we “leave only footprints, take only memories/pictures” when you are in parks.

Keeping your dog on a leash ensures you have control regardless of distractions including bicyclists, runners, children, cars, motorcycles, birds and other animals. Proper leashing keeps dogs safe from hazards that may injure or kill them. In addition, other park visitors (and their leashed dogs) may not want to meet your dog. A leash keeps your dog close, making it easier to track and dispose of their waste.

Park rangers frequently hear from potential park and trail users who do not use trails because dogs are off-leash. Letting your dog off-leash creates the impression that it’s acceptable and others will assume they can do so as well. People see the trails being frequented by off-leash dogs and avoid the area and many regular users of Riverview Park avoid the trails because of off-leash dogs.

Off-leash dogs have a significant impact on plants, animals and the overall ecosystem. The impact has a cumulative effect and grows over time:

- Off-leash dogs disturb nesting areas and damage sensitive wildlife habitat. Animals are alarmed and cease their routine activities. This increases the amount of energy they use, while simultaneously reducing their opportunities to feed. Repeated stress causes long-term impacts on wildlife including reduced reproduction and growth, suppressed immune system and increased vulnerability to disease and parasites. Ground-nesting birds are particularly vulnerable to off-leash dogs
- Dogs urinating in nesting and sensitive wildlife habitats “marks” the territory, which makes it undesirable or uninhabitable to the wildlife living there; the scent of dogs repels wildlife and the effects remain after the dogs are gone.
- Dog fur/paws pick up seeds, which can spread invasive plant species
- Unleashed dogs can chase and injure, or kill, squirrels, ducks and other wildlife

Dog feces are also an on-going issue in Riverview Park as many owners do not pick up their dog’s waste believing that this 267-acre park can absorb it along with all the wild animals that live here. However, dog feces contains bacteria and organisms that can spread disease in people. A single gram of dog waste could contain 23 million fecal coliform bacteria, which are known to cause cramps, diarrhea, intestinal illness, and serious kidney disorders in humans. It can take up to a full year for dog waste to decompose and when it does, it deposits excessive amounts of nitrogen to the soil which can harm native plants. Unlike human waste, which is directed into sewage pipes, dog waste left on the ground pollutes water. Environmental Protection Agency estimates that two or three days’ worth of droppings from a population of about 100 dogs would contribute enough bacteria to temporarily close a bay, and all watershed areas within 20 miles of it. Are there 100 dogs “contributing” in Riverview Park? Given that the park sits at one of the highest point in Pittsburgh, dog feces left on the ground will end up in Pittsburgh waterways after it is done polluting the park environment.

Let’s each do our part to keep Riverview Park alive, growing and healthy for another century by being aware of the impact we have on this fragile ecosystem.

Ranger Nancy Schaefer
nancy.schaefer@pittsburghpa.gov

5K Run and Fitness Walk/Heritage Day Festival by Dorrie Smith

Citiparks in partnership with Observatory Hill Inc. will kick off our 10th summer season with Riverview Park's 5K Run and Fitness Walk at 7:00 pm on Friday June 9th and Heritage Day Festival on Saturday, June 10th from 12:00 – 4:00 pm in Riverview Park.



Heritage Day Festival begins the Stars at Riverview Summer Concerts and Movies Series. Families can enjoy a day of frontier exploration, Native American snacks and various crafts. Stop by the Observatory Hill

Inc.'s booth to meet OHI's Board of Directors and see what is new and happening in Observatory Hill. See our displays of the revitalization projects currently underway. New this year, we are excited to have Angels' Place, Animal Friends and Bear Dog Bicycles joining the Festival. Also new this year is a Chili Cook-off with our very own Engine 34 fire house participating in the contest. Returning vendors include A+ Schools, Bike Pittsburgh, Friends of Riverview Park, the Northside Chronicle, Three Rivers Rowing,

Roving Art Cart and Lee Robinson & ISKA providing live jazz. Our traditional attractions include Arts in the Park, Venture Outdoors Bike Rodeo, Petting Zoo, Pony Rides, our favorite animal pals from the Animal Rescue League, the Humane Society and more will also be returning. Children over 10 years' old will have a blast being a puppeteer inside a giant puppet – dancing, greeting visitors and posing for pictures. Thanks to a grant from One Northside given to Studio Capezzuti, the puppets may then be taken home by the children.

The Heritage Day Festival features more than 30 non-profit groups providing hands-on family activities. City of Pittsburgh Public Safety Dept. features their EMS, Bomb Squad and Police K9 Unit. Check out Allegheny General with on-site health consultations and free tours at The Observatory from 1- 3:00 pm Enjoy a free Hot Dog, Baked Bean lunch from 1:30 – 2:30 pm Gather your family and friends and join your neighbors across the Northside for a weekend of community fun for all ages inside beautiful Riverview Park in Observatory Hill.

If you would like to volunteer your services for either event, please contact Dorrie Smith OHI Board Member and Chairperson for The Heritage Day Festival at 412-877-4828 or email her 4dsmigroup@gmail.com. Event is rain or shine!

CALENDAR OF EVENTS

JUNE 3: Neighborhood Clean Up: Join us from 10am to Noon on Saturday, June 3rd. We will pick up trash in the business district and as many side streets as time allows. Meet in the parking lot across from Schorr's Bakery. Tools, gloves and bags are provided.

June 4: Observatory Hill House Tour from Noon to 5pm. Annual house tour which benefits and showcases our unique neighborhood.

June 9: Riverview Park 5K Race and Fitness Walk begins at 7pm with the kick-off of the Heritage Day Festival.

June 10: Heritage Day Festival continues at Riverview Park from Noon to 4pm. A variety of festival activities and exhibits which include fun for all ages.

June 10 – August 26: Stars at Riverview Jazz Series and Cinema in the Park runs each Saturday throughout the summer. Concert begins at 7pm followed by a movie at dusk. Bring a lawn chair or a blanket and enjoy music and movies under the stars.

JUNE 15: Northside Leadership Annual Scholarship & Awards Dinner held at the Grand Hall. This 34th annual dinner will honor the outstanding students, businesses and neighborhood volunteers who make our community great.

June 17: Baytree Street Community Garden Hot Dog Roast from 6pm – 9pm: Join us for a community gathering and let's break in our new patio space and fire pit. OHI will provide the hot dogs and drinks. Other side dishes welcome. Garden is located at 3712 Baytree Street.

June 21: Monthly OHI Board Meeting at 7pm at the Byzantine Seminary 3605 Perrysville Avenue. All are welcome to attend.

July 19: Monthly OHI Board Meeting at 7pm at the Byzantine Seminary 3605 Perrysville Avenue. All are welcome to attend.

August 16: Monthly OHI Board Meeting at 7pm at the Byzantine Seminary 3605 Perrysville Avenue. All are welcome to attend.

Neighborhood Clean Up

Join us from 10am to Noon on Saturday, June 3 as we pretty up the neighborhood in preparation for the annual house tour the following day. We will meet in the parking lot across from Schorr's Bakery and will work to pick up litter in the business district and as many side streets as time allows. Tools, bags and gloves will be provided.

Baytree Garden Community Gathering

All are welcome to join us on Saturday, June 17th from 6 pm to 9 pm for a summer hot dog roast. We will be breaking in our new patio space and fire pit thanks to the funds provided to us by The Sprout Fund's Neighbor to Neighbor Grant. OHI will provide the hot dogs, drinks and condiments. Other side dishes are welcome.

THE OHI BOARD

Dorrie Smith
President

Leslee Schaffer
Treasurer

Marlee Gallagher
Vice President

Jeff Wagner
Secretary

Walt Nalducci
*Northside Leadership
Conference*

Chris Cruz
*Communications &
Marketing*

Jasun Stanton
Public Safety

Matthias Sundberg
Business District

Doug Deckert
*Dinner Events
Assistant Treasurer*

Michael Payne
Business District

Jason Wrona

Glenn Miller
Assistant Secretary

OHI Board Contact Info:

Phone: 412-736-2489 Email: ohipgh@gmail.com Website: www.observatoryhill.net

Design and Layout: Scott Pipitone, courtesy Pipitone Group – 412-321-0879

Printing: Dave Gilbreath, courtesy Knepper Press – 412-241-1189

OHI Journal

P.O. Box 100247
Pittsburgh, PA 15233

Non-Profit
U.S. Postage
PAID
Permit No. 3666
Pittsburgh, PA

Annual Registration Form for Membership to Observatory Hill Inc.

Mail to: Observatory Hill Incorporated.
P.O. Box 100247, Pittsburgh, PA 15233
412-736-2489

Members Name _____

Address _____

City _____ State _____ Zip _____

Phone _____ Date Paid _____

E-mail Address _____

Membership Contribution: (check one)

___ \$5 ___ \$10 ___ \$15 ___ \$50 ___ Other
(Business Membership)

___ Please include me on the email list that
provides information on local activities
and important community notices.

___ Do not include me on any email
notifications.

Make Checks Payable to: Observatory Hill Inc.